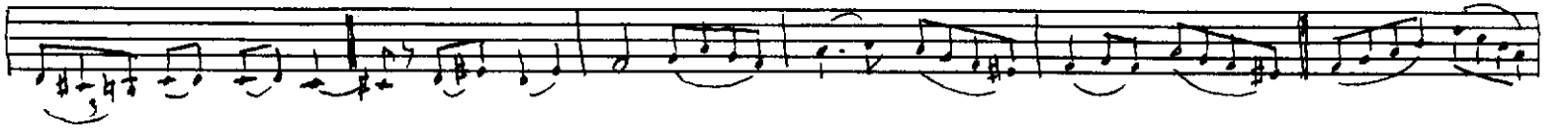


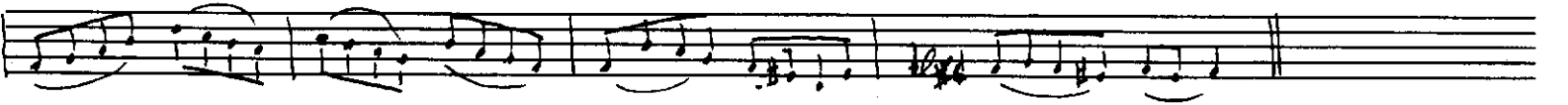
Usul: Çiftedüğüç

Trak Peşrevi
No=11

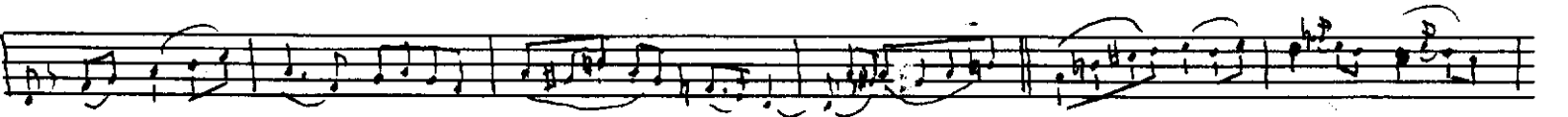
(Elçi) nin
(R. Fırıncıdan)



Zeslim



2^{ci} Hâne
Mülazimesi

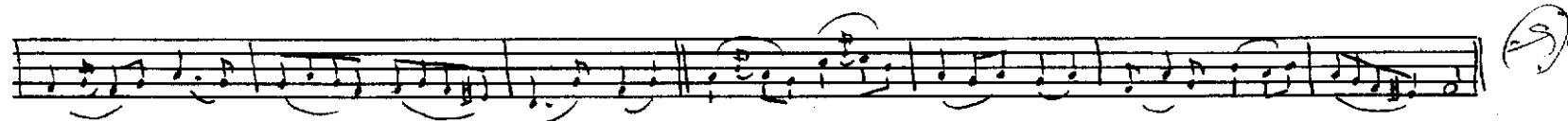
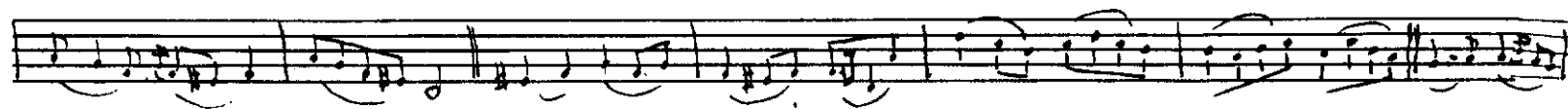


2. A.

The second system of the handwritten musical notation continues the melody. It begins with a treble clef and a key signature of one sharp (F#). The melody is written on a single staff with a common time signature (C). The notation includes various note values, including eighth and sixteenth notes, and rests. There are several slurs indicating phrasing. The system ends with a double bar line.



Handwritten musical notation on a five-line staff. The key signature has one sharp (F#). The melody consists of several measures with eighth and sixteenth notes, some beamed together. There are slurs over some groups of notes. The notation is in a cursive, handwritten style.



15210-1963 *R. Furman*

Jimmy Koral